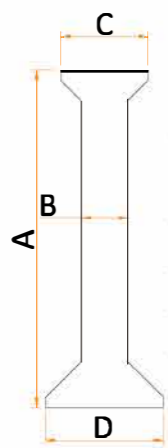


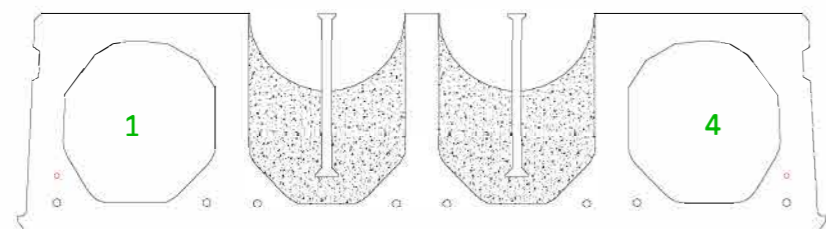
320mm

Typical Strand Pattern ; 8 no; 12.5mm & 2 no; 9.3mm Strands
Optional Strand Pattern ; Various
Weight of Unit = 3.78kn/m ² or 4.54kn/lm
Additional Weight / Lifter = 100kg/Lifter
Lifters Used = 5 tonne
Approx Load On Standard Artic = 65m ²
Concrete/Bed = 29m ³
Cross Sectional Area = 0.371563m ²
Area of Core = 0.044690m ²
Area of Shear Key / Slab = 0.012313m ²
Weight of 9.3mm Strand/m = 0.42kg/lm
Weight of 12.5mm Strand/m = 0.74kg/lm
Weight of Solid End = 0.43kg x Length of Solid End

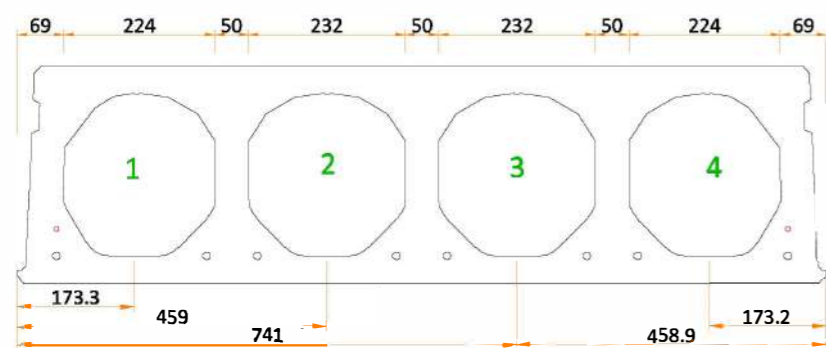
Split Limits ~ 320mm HC
Core No 1.
Core No 2. 415mm ~ 505mm
Core No 3. 695mm ~ 785mm
Core No 4. 985mm ~ 1075mm



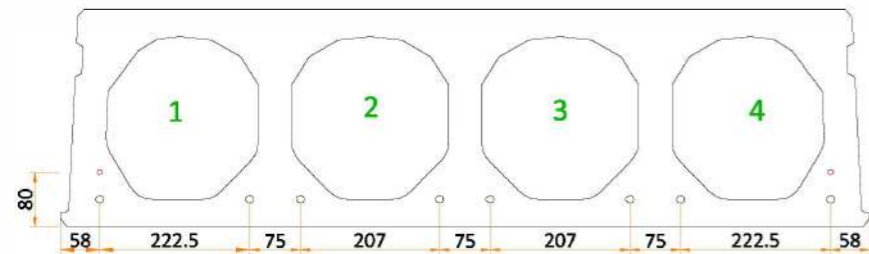
Lifter Details
Capstan Transport Anchor
Load Group. = 5.0T
Length A = 180mm
Shank Dia, B = 20mm
Head Dia, C = 36mm
Foot Dia, D = 50mm



Typical Lifter Locations



Core Locations & dimensions



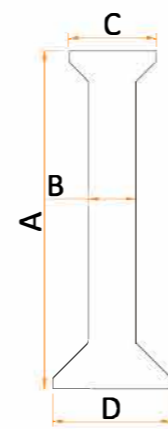
Strand Locations

320mm	Load Span Table based on typical strand pattern of 8 no 12.5mm & 2 no 9.3mm strands												
Span (m)	7.0	7.5	8.0	8.5	9.0	9.5	10.0	10.5	11.0	11.5	12.0	12.5	13.0
Without Screed	16.5	15.0	14.0	13.0	12.0	11.0	10.0	8.5	7.5	6.0	5.5	4.5	4.0
With 50mm Struc. Screed	18.0	16.5	15.0	13.5	12.5	11.5	10.5	10.0	9.0	7.5	6.5	5.5	5.0
With 75mm Struc. Screed	18.5	17.0	15.5	14.0	13.0	11.5	11.0	10.0	9.0	8.0	7.0	6.0	5.0
Note ; Self weight of unit = 3.78kn/m ² (already deducted from table). All Loads are Max imposed in kn/m ²													

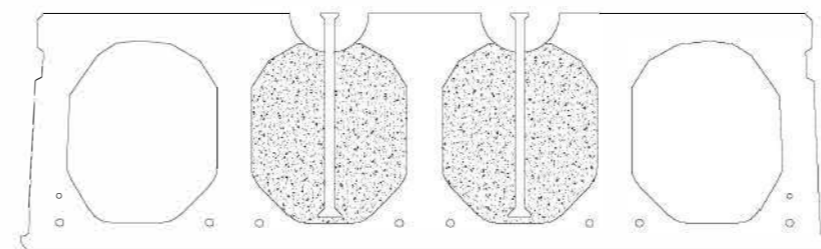
350mm

Typical Strand Pattern ; 8 no; 12.5mm & 2 no; 9.3mm Strands
Optional Strand Pattern ; Various
Weight of Unit = 3.95kn/m ² or 4.74kn/lm
Additional Weight / Lifter = 100kg/Lifter
Lifters Used = 7.5 tonne
Approx Load On Standard Artic = 65m ²
Concrete/Bed = 34m ³
Cross Sectional Area = 0.406073m ²
Area of Core = 0.053327m ²
Area of Shear Key / Slab = 0.013793m ²
Weight of 9.3mm Strand/m = 0.42kg/lm
Weight of 12.5mm Strand/m = 0.74kg/lm
Weight of Solid End = 0.43kg x Length of Solid End

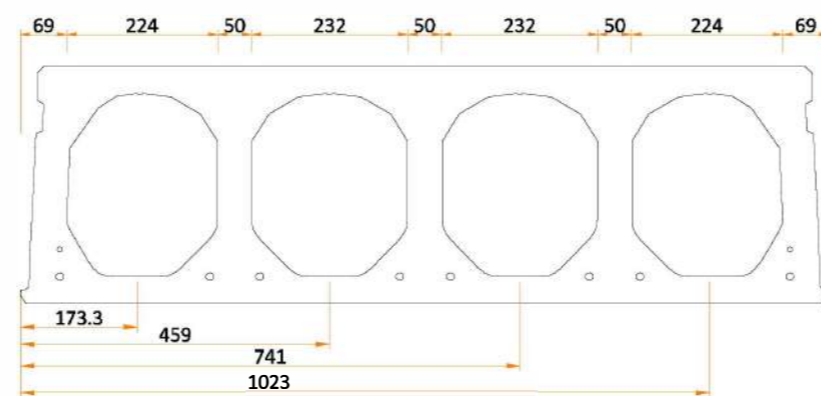
Split Limits ~ 350mm HC
Core No 1.
Core No 2. 415mm ~ 505mm
Core No 3. 695mm ~ 785mm
Core No 4. 985mm ~ 1075mm



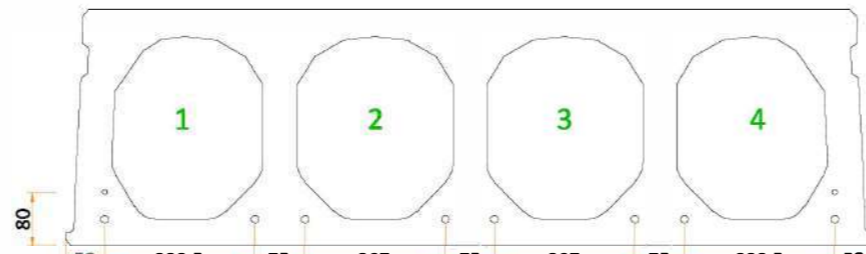
Lifter Details
Capstan Transport Anchor
Load Group. = 7.5T
Length A = 300mm
Shank Dia, B = 24mm
Head Dia, C = 46mm
Foot Dia, D = 60mm



Typical Lifter Locations



Core Locations & dimensions



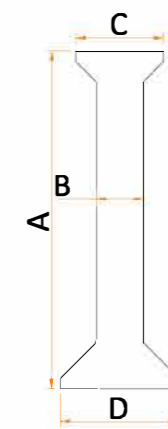
Strand Locations

350mm	Load Span Table based on typical strand pattern of 8 no 12.5mm & 2 no 9.3mm strands												
Span (m)	7.0	7.5	8.0	8.5	9.0	9.5	10.0	10.5	11.0	11.5	12.0	12.5	13.0
Without Screed	19.5	18.0	16.5	15.0	14.0	13.0	12.0	10.5	9.5	8.0	7.0	6.0	5.0
With 50mm Struc. Screed	21.0	19.0	17.5	16.0	15.0	13.5	12.5	11.5	10.0	9.0	7.5	6.5	6.0
With 75mm Struc. Screed	22.0	20.0	18.0	16.5	15.5	14.0	13.0	12.0	10.5	9.5	8.0	7.0	6.0
Note ; Self weight of unit = 3.95kn/m ² (already deducted from table). All Loads are Max imposed in kn/m ²													

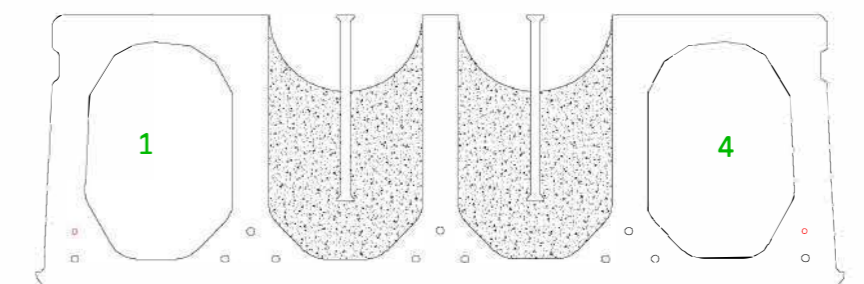
400mm

Typical Strand Pattern ; 11 no; 12.5mm & 2 no; 9.3mm Strands
Optional Strand Pattern ; Various
Weight of Unit = 4.332kn/m ² or 5.18kn/lm
Additional Weight / Lifter = 145kg/Lifter
Lifters Used = 7.5 tonne
Approx Load On Standard Artic = ???m ²
Concrete/Bed = 33m ³
Cross Sectional Area = 0.463571m ²
Area of Core = 0.059745m ²
Area of Shear Key / Slab = 0.016318m ²
Weight of 9.3mm Strand/m = 0.42kg/lm
Weight of 12.5mm Strand/m = 0.74kg/lm
Weight of Solid End = 0.57kg x Length of Solid End

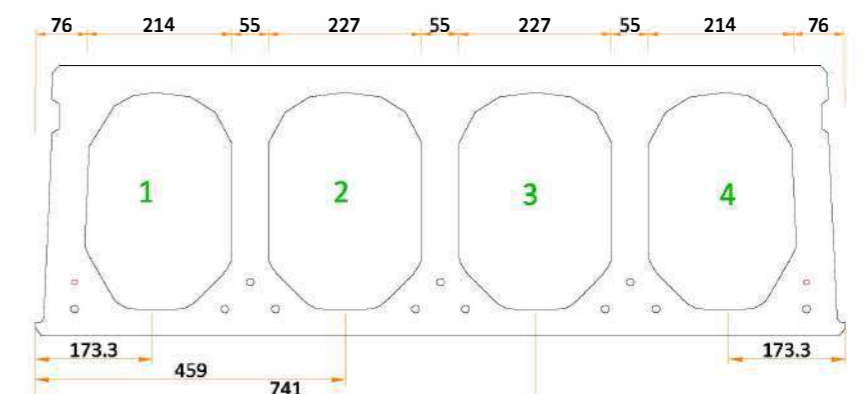
Split Limits ~ 400mm HC
Core No 1.
Core No 2. 420mm ~ 500mm
Core No 3. 700mm ~ 780mm
Core No 4. 980mm ~ 1060mm



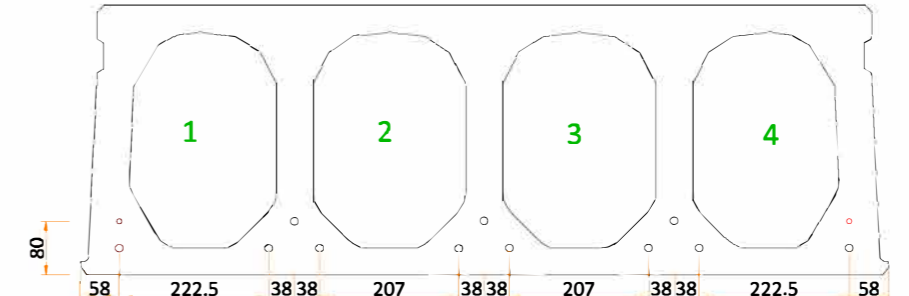
Lifter Details
Capstan Transport Anchor
Load Group. = 7.5T
Length A = 300mm
Shank Dia, B = 24mm
Head Dia, C = 46mm
Foot Dia, D = 60mm



Typical Lifter Locations



Core Locations & dimensions



Strand Locations

400mm	Load Span Table based on typical strand pattern of 11 no 12.5mm & 2 no 9.3mm strands														
Span (m)	9.0	9.5	10.0	10.5	11.0	11.5	12.0	12.5	13.0	13.5	14.0	14.5	15.0		
Without Screed	19.0	17.5	16.5	15.5	14.5	12.5	10.5	9.5	8.0	7.0	6.0	5.5	4.5		
With 50mm Struc. Screed	20.0	18.5	17.0	16.0	15.0	14.0	13.0	11.5	10.5	9.0	8.0	7.0	6.0		
With 75mm Struc. Screed	20.5	19.0	17.5	16.5	15.5	14.5	13.5	12.0	11.0	9.5	8.5	7.5	6.5		
Note ; Self weight of unit = 4.32kn/m ² (already deducted from table). All Loads are Max imposed in kn/m ²															