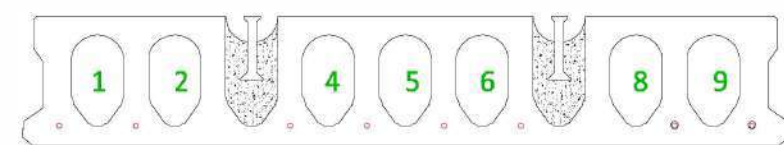
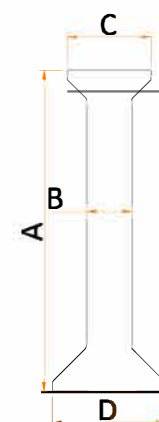


200mm Dense

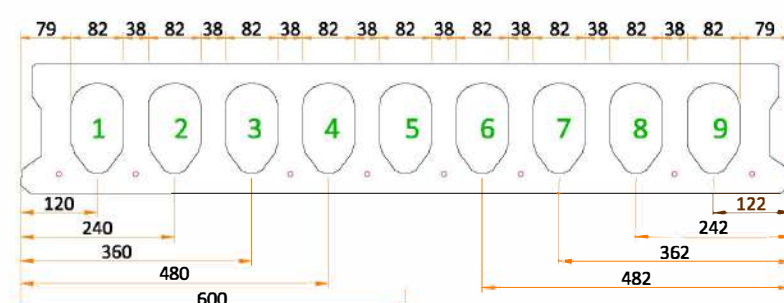
Typical Strand Pattern ; 8 no; 9.3mm Strands
Optional Strand Pattern ; Various
Weight of Unit = 3.0kn/m ² or 3.60kn/lm
Additional Weight / Lifter = 20kg/Lifter
Lifters Used = 2.5 tonne
Approx Load On Standard Artic = 85m ²
Concrete/Bed = 20.5m ³
Cross Sectional Area = 0.230725m ²
Area of Core = 0.009738m ²
Area of Shear Key / Slab = 0.008269m ²
Weight of 9.3mm Strand/m = 0.42kg/lm
Weight of 12.5mm Strand/m = 0.74kg/lm
Weight of Solid End = 0.23kg x Length of Solid End

Split Limits ~ 200mm Heavy HC
Core No 1. 90mm ~ 145mm
Core No 2. 210mm ~ 265mm
Core No 3. 330mm ~ 385mm
Core No 4. 450mm ~ 505mm
Core No 5. 570mm ~ 625mm
Core No 6. 690mm ~ 745mm
Core No 7. 810mm ~ 865mm
Core No 8. 930mm ~ 985mm
Core No 9. 1050mm ~ 1105mm

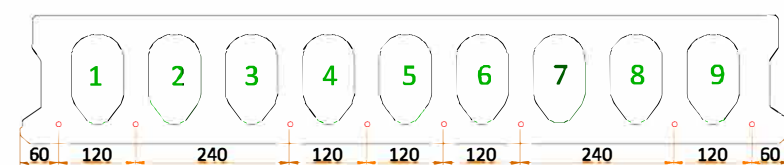
Lifter Details
Capstan Transport Anchor
Load Group. = 2.5T
Length A = 120mm
Shank Dia, B = 14mm
Head Dia, C = 26mm
Foot Dia, D = 35mm



Typical Lifter Locations



Core Locations & dimensions



Strand Locations

200mm Dense	Load Span Table based on typical strand pattern of 8 no 9.3mm strands										
Span (m)	4.0	4.5	5.0	5.5	6.0	6.5	7.0	7.5	8.0	8.5	9.0
Without Screed	25.5	19.5	15.0	12.0	9.5	7.5	6.0	5.0	4.0	3.0	2.5
With 50mm Struc. Screed	32.5	24.5	19.0	15.0	12.0	9.5	7.5	6.0	5.0	4.0	3.0
With 75mm Struc. Screed	36.5	27.5	21.5	17.0	13.5	10.5	8.5	7.0	5.5	4.5	3.5

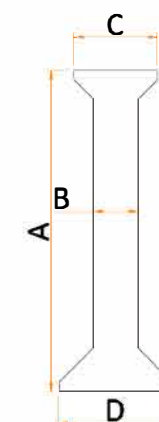
Note ; Self weight of unit = 3.00kn/m² (already deducted from table). All Loads are Max imposed in kn/m²

250mm

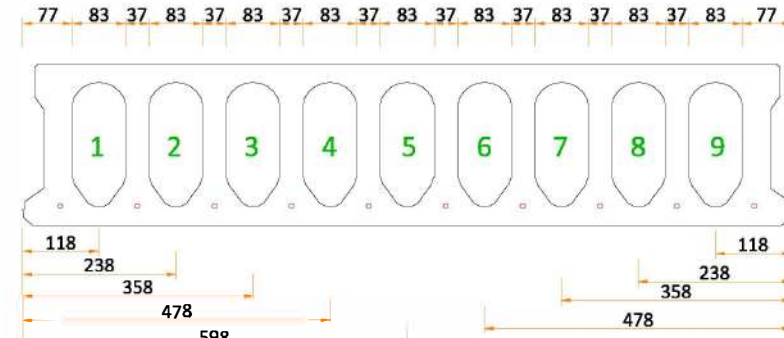
Typical Strand Pattern ; 10 no; 9.3mm Strands
Optional Strand Pattern ; Various
Weight of Unit = 3.33kn/m ² or 3.99kn/lm
Additional Weight / Lifter = 40kg/Lifter
Lifters Used = 5.0 tonne
Approx Load On Standard Artic = 75m ²
Concrete/Bed = 23m ³
Cross Sectional Area = 0.287325m ²
Area of Core = 0.014146m ²
Area of Shear Key / Slab = 0.011469m ²
Weight of 9.3mm Strand/m = 0.42kg/lm
Weight of 12.5mm Strand/m = 0.74kg/lm
Weight of Solid End = 0.34kg x Length of Solid End

Split Limits ~ 250mm HC
Core No 1.
Core No 2.
Core No 3. 330mm ~ 385mm
Core No 4. 450mm ~ 505mm
Core No 5. 570mm ~ 625mm
Core No 6. 690mm ~ 745mm
Core No 7. 810mm ~ 865mm
Core No 8. 930mm ~ 985mm
Core No 9. 1050mm ~ 1105mm

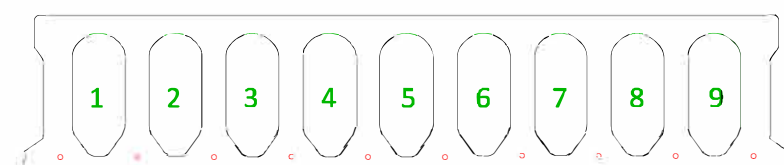
Lifter Details
Capstan Transport Anchor
Load Group. = 5.0T
Length A = 180mm
Shank Dia, B = 20mm
Head Dia, C = 36mm
Foot Dia, D = 50mm



Typical Lifter Locations



Core Locations & dimensions



Strand Locations

250mm	Load Span Table based on typical strand pattern of 10 no 9.3mm strands												
Span (m)	5.0	5.5	6.0	6.5	7.0	7.5	8.0	8.5	9.0	9.5	10.0	10.5	11.0
Without Screed	25.5	21.0	17.0	14.0	11.5	9.5	8.0	6.5	5.5	4.5	4.0	3.0	2.5
With 50mm Struc. Screed	30.5	25.0	20.0	16.5	13.5	11.0	9.0	7.5	6.0	5.0	4.5	3.5	3.0
With 75mm Struc. Screed	32.5	27.0	22.0	18.0	14.5	12.0	10.0	8.5	6.5	5.5	4.5	3.5	3.0

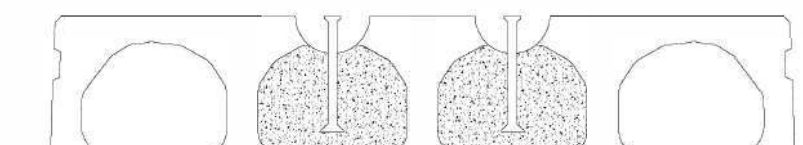
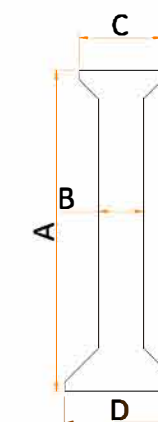
Note ; Self weight of unit = 3.33kn/m² (already deducted from table). All Loads are Max imposed in kn/m²

300mm

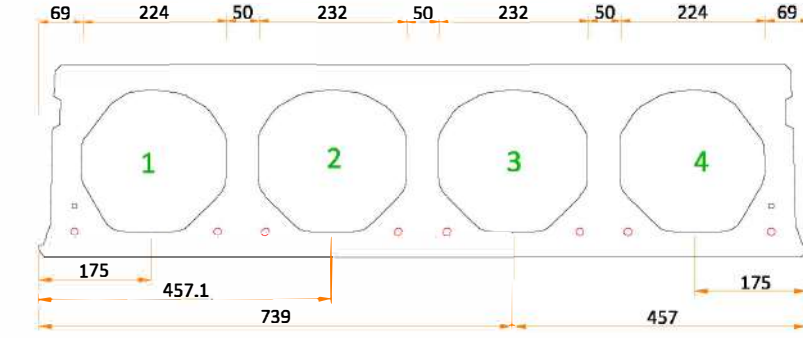
Typical Strand Pattern ; 8 no; 12.5mm & 2 no; 9.3mm Strands
Optional Strand Pattern ; Various
Weight of Unit = 3.64kn/m ² or 4.37kn/lm
Additional Weight / Lifter = 100kg/Lifter
Lifters Used = 5.0 tonne
Approx Load On Standard Artic = 65m ²
Concrete/Bed = 28m ³
Cross Sectional Area = 0.347445m ²
Area of Core = 0.042012m ²
Area of Shear Key / Slab = 0.01244m ²
Weight of 9.3mm Strand/m = 0.42kg/lm
Weight of 12.5mm Strand/m = 0.74kg/lm
Weight of Solid End = 0.42kg x Length of Solid End

Split Limits ~ 320mm HC
Core No 1.
Core No 2. 415mm ~ 505mm
Core No 3. 695mm ~ 785mm
Core No 4. 985mm ~ 1075mm

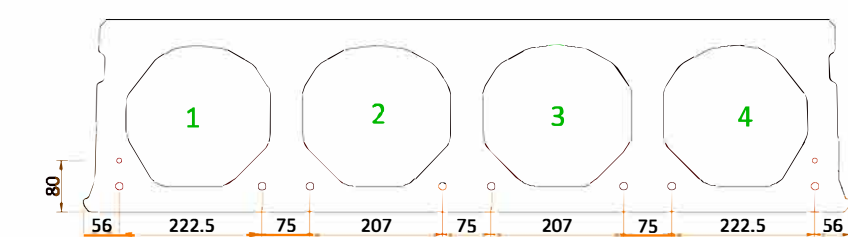
Lifter Details
Capstan Transport Anchor
Load Group. = 5.0T
Length A = 180mm
Shank Dia, B = 20mm
Head Dia, C = 36mm
Foot Dia, D = 50mm



Typical Lifter Locations



Core Locations & dimensions



Strand Locations

300mm	Load Span Table based on typical strand pattern of 8 no 12.5mm & 2 no 9.3mm strands													
Span (m)	7.0	7.5	8.0	8.5	9.0	9.5	10.0	10.5	11.0	11.5	12.0	12.5	13.0	
Without Screed	15.0	13.5	12.5	11.5	10.5	9.5	8.5	7.0	6.0	5.0	4.5	3.5	3.0	
With 50mm Struc. Screed	16.0	14.5	13.0	12.0	11.0	10.0	9.5	8.5	8.0	7.0	6.0	5.0	4.0	
With 75mm Struc. Screed	16.5	15.0	13.5	12.5	11.5	10.5	9.5	8.5	8.0	7.5	6.5	5.5	4.5	

Note ; Self weight of unit = 3.64kn/m² (already deducted from table). All Loads are Max imposed in kn/m²